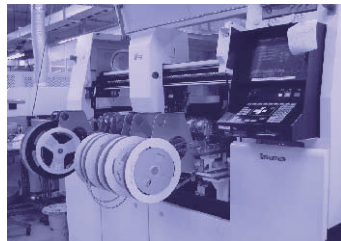


Optical fiber and wireless broadband solutions

## OA LABORATORY CO., LTD.



<http://www.oalab.co.jp/>



Scope of registration

- ① In-house development and manufacture of telecommunications equipment
- ② Outsourcing development and manufacture of telecommunications equipment and telecommunications equipment mounting boards
- ③ Repair of telecommunications equipment and electronic component mounting boards

company profile

# ◆ Development and production OEM & EMS manufacturer



*Quality*

*Punctual Delivery*

*Confidentiality*

## ► Broad range of operations and full business organization for product manufacturing!!

*One Stop* support, from development and production to repair and maintenance services!

- ✎ ◆ Creating products to meet customers' needs as a development, trial manufacture and mass production OEM for the telecommunications sector!
- ✎ ◆ Let OA handle all of your mass production, trial manufacture, small-run production, multi-product order and short turn-around needs!

## Engineering Division

E n g i n e e r i n g

As a seasoned OEM manufacturer with long years of experience, including order development aligned with the diverse demands of customers and OEM product development and design, we've earned a superb reputation and the full trust of our customers based on production performance plus the development and technical capabilities to actively address many sectors.

Specifications review → Parts selection → Circuit design → Materials procurement → Substrate mounting → Debugging and evaluation → Product shipment and delivery

Hardware  
development

L2 switches

Board and circuit design

Telecommunications  
equipment development

FPGA design

High-speed optical fiber  
telecommunications equipment

Replacement part and  
replacement design

Microcomputer  
application products

Housing design

Software  
development

Application development

Driver development

## Manufacturing Division

M a n u f a c t u r i n g

Along with the manufacture of products designed by our Engineering Division, we also actively handle operations such as embedding production of components, including boards, housings and equipment, designed by customers themselves.

We can also mount printed circuit boards at high-speed, high-quality and high density with our lead-free surface mounting system.

Materials procurement → Substrate mounting → Assembly → Shipment testing → Product shipment and delivery

Substrate mounting

Housing assembly

Performance evaluation  
and testing

Product packing  
and shipment



### ■ Customization of layer 2 switches ■



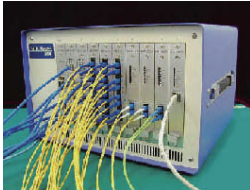
- ◇ Environment-specific customization  
Waterproofing, protection against static electricity and vibrations
- ◇ Application-specific customization  
10/100/1000M 1/10G changeable ports
- ◇ Customization for outdoor installation, high reliability or long-term (10 year) continuous use
- ◇ Low-volume production  
(we can handle production runs from just a single unit)

### ■ Improvement, repair, maintenance and overhaul service ■



- ◇ Addition and improvement of extra functions for existing products
- ◇ Repair of products after their maintenance period has ended
- ◇ Component replacement, overhaul of long-lived products  
Replacement of power supplies, electrolytic condensers and fans

### ■ Evaluation and testing service ■



- ◇ Heat and humidity environment testing  
Continuousness operation under high and low temperatures, high-temperature/low-temperature cycle testing
- ◇ Network device transmission testing
- ◇ Vibration testing and drop testing

### ■ Environmental Test Chambers rental service ■



- ◇ Provision of testing environments using large-scale, constant-temperature and constant-humidity tanks
- ◇ Acceleration testing
- ◇ Life expectancy
- ◇ Reliability testing

### ■ Replacement design service for out-of-production parts ■

We offer upgrade design of replacement parts for components that are no longer in production or past their maintenance warranty period

### ■ Parts service ■

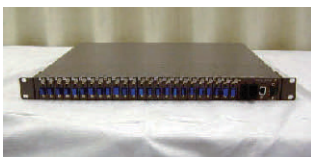
We offer an early-stage parts delivery service, a replacement parts proposal service for out-of-production parts and a customer surplus parts inventory brokerage service.

### ■ Engineer support service ■

We can provide the human resources needed for each sector of manufacturing, repair, testing and design (hardware/software)



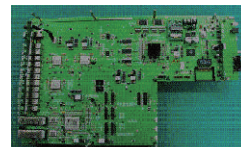
## Optical fiber network technology



▲ FTTH optical switch HUB



▲ 10G Load balancer



▲ 10G Load balancer

### Development

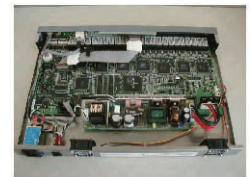
and  
proven results



▲ XG-2



▲ Layer 2 switch



▲ Layer 2 switch



▲ PCI processor card



▲ Stand-alone media converter □



▲ Wireless LAN module

## Company Overview

### ORGANIZATION

- Company name : OA Laboratory Co., Ltd.
- Established : February 1965
- Capital : 451 million yen
- Principal shareholder: FUJISOFT Inc. (Tokyo Stock Exchange, First Section)
- Executive officers : chairman of the board Yoshiharu Yada  
President and CEO Kiyofumi Matsuzaki  
Managing Director Yoshinori Ohara  
Director Hisao Minematsu  
Director Koji Kayanuma  
Auditor Osamu Akamatsu
- Employees : 4/2021 156
- Main banks : MUFG Bank, Ltd. Mizuho Bank, Ltd.  
The Bank of Yokohama, Ltd.  
Mitsubishi UFJ Trust and Banking Corp.
- Certifications etc. : \* VCCI Council  
\* ISO 9001:2000  
\* IoT Acceleration Consortium Corporate membership  
\* Photonic Internet Forum Corporate membership

## Company History

### CORPORATE HISTORY

- 1965 Established in February 1965  
Head Office: Totsuka-ku, Yokohama
- 1967 Established Software Division
- 1973 Completed construction of head office building in Machiya in Kamakura  
Began development and production of computer peripheral equipment
- 1980 Completed construction of Fujisawa Plant
- 1984 Began OEM production of LAN-related equipment
- 1986 Increased capital to 100 million yen
- 1990 Increased capital to 451 million yen
- 1991 Began in-house production and sales of LAN-related equipment
- 1995 Began development and OEM production of 3D CG equipment
- 1996 Formed capital tie-up with FUJISOFT Inc.  
Began development (first in Japan) and OEM sale of 100M switching HUB
- 1997 Began development and sale of switching HUB testing equipment
- 1998 Developed electron beam exposure drawing system for VLSI (Ministry of International Trade and Industry project)
- 2001 Introduced Giga-Switch for ATMs  
Introduced Giga-Switching HUB  
Began development and sale of switching HUB testing equipment for optical fiber  
Relocated head office to Dai in Kamakura  
Formed technical alliance with USI in Taiwan
- 2003 Joined PICMG JAPAN in Aiplr  
Registered for ISO 9001:2000 certification in August (Fujisawa Plant)
- 2004 Registered for ISO 9001:2000 expansion certification in September (Development Division)
- 2005 Registered for Ministry of the Environment Eco-Action 21 examination in April
- 2009 Began sales of 10G bad balancer in February
- 2013 Began sales of Giga Bit ether layer1 switching device
- 2014 Began sales of U-SDI 8K Video signal switching device
- 2015 Began sales of U-SDI 8K Voice demultiplexing device  
Began sales of U-SDI 120Hz 8K Video signal switching device

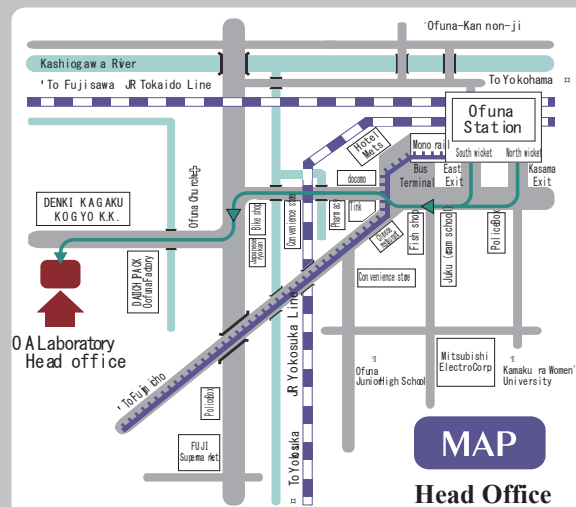
## Business Offices

### ADDRESS



### Head Office

2-15-41 Dai, Kamakura,  
Kanagawa Prefecture 247-0061  
TEL: 0467(44)5566 FAX: 0467(48)0256

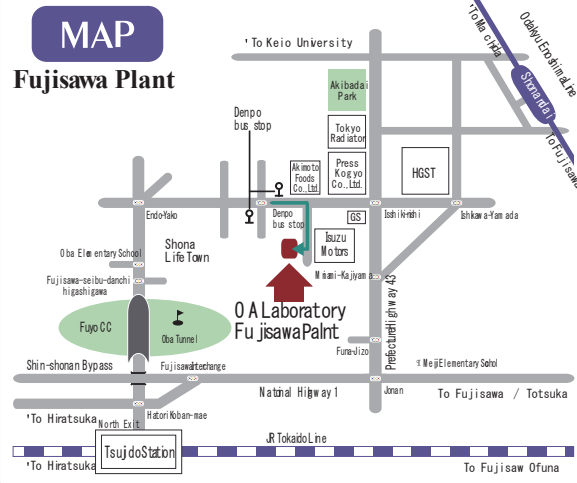


▲ Route: About 12 minutes on foot from JR Ofuna Station



### Fujisawa Plant

2021-10 Endo, Fujisawa,  
Kanagawa Prefecture 252-0186  
TEL: 0466(87)87 11 FAX: 0466(87)7988



▲ Route: About 3 minutes on foot from the Denpo Bus Stop, which is about 15 minutes by bus from the Odakyu Line Shonandai Station or about 25 minutes by bus from the JR Tokaido Line Tsujido Station

## For inquiries:

### ● Sales Group

**TEL:0467(48) 0251**

**E-Mail: eigyo@oalab.co.jp**

**http://www.oalab.co.jp/**